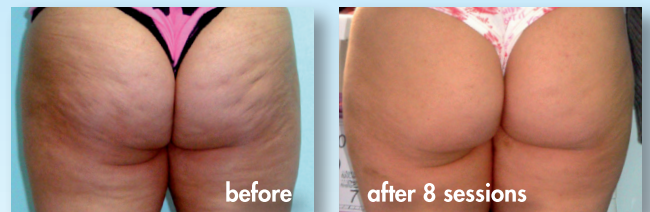


Omeoformula[®] 2

sterile ampoules/vials

Cellulite



Description

Circulatory disorders, inadequate activity of the physiological emunctories, hormone problems, psychoemotional stress, sedentary lifestyle, incorrect diet, drug abuse etc. can lead to an accumulation of toxins in the connective tissue; this results in a change in the composition and also the structure of this tissue and causes the formation of Cellulite.

The pathogenesis of Cellulite can be divided into 4 different stages of development:

- I) Oedematous stage
- II) Oedema + suffering of adipocytes and vessels
- III) Organisation of oedema + organisation of the fibrillar component → FIBROSIS
- IV) Formation of micro and macro nodules → SCLEROSIS

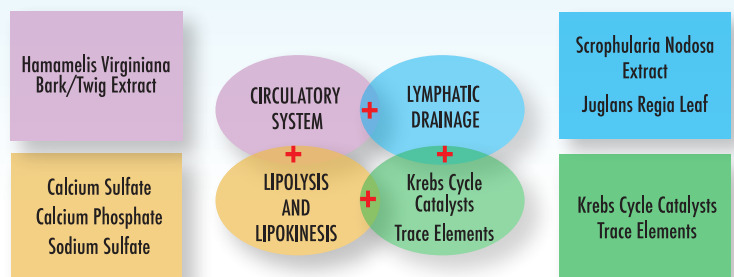
It is important to note that Cellulite is a complex matter causing an actual rearrangement of the structure of the connective tissue as illustrated by the following phenomena:

- The collagen fibres, which have increased in number and density, "strangle" the adipose cells
- The elastic fibres appear broken
- As the blood and lymphatic vessels are blocked and congested, they don't allow good drainage of toxins - the interstitial substance therefore becomes a pool where the toxic products of the altered cell metabolism collect
- The nerve endings, which end in the matrix, "receive" the signals of histologic change in the connective tissue and begin to send out pain messages.

On the basis of these assumptions, the cosmetic strategy for Cellulite must, therefore, have 4 points of attack.

CELLULITE

Cosmetic strategy – 4 points of attack



Uses

Oedematous-fibrosclerotic Lipodystrophy or Cellulite.

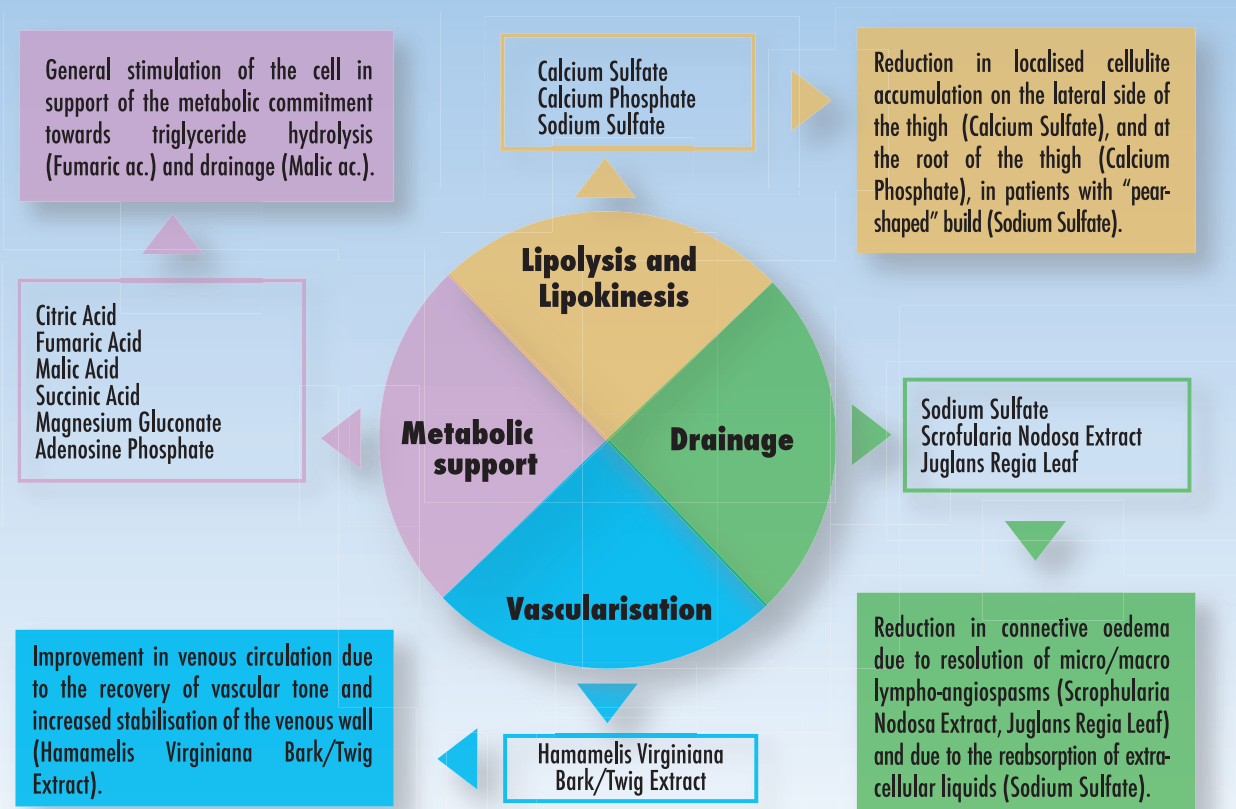
Omeoformula[®] 2 is indicated for both hard and soft cellulite in all the areas that may be affected (saddlebags, root of the thigh, knees, arms).

Ingredients

Aqua, Citric Acid, Fumaric Acid, Malic Acid, Succinic Acid, Calcium Sulfate, Calcium Phosphate, Echinacea Angustifolia Extract, Hamamelis Virginiana Bark/Twig Extract, Magnesium Gluconate, Sodium Sulfate, Scrophularia Nodosa Extract, Juglans Regia Leaf, Adenosine Phosphate.

Omeoformula® 2

Omeoformula® 2 helps reduce cellulite via the synergism of its ingredients

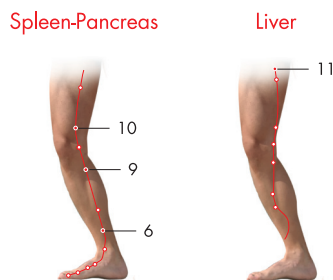


Directions

Apply **Omeoformula® 2** and **Gel Beauty** to the skin by using:

- magnetophoresis (**GUNAPHORESIS device**), ionophoresis, iontophoresis, electroporation, ultrasound devices, electrophoresis,
- the micro-needling technique.

If possible, apply **Omeoformula® 2** to the following acupuncture points: **Spleen-Pancreas 6/9/10**, **Liver 11**.



The standard protocol consists of 1-2 session/s a week for 8-10 weeks.

For long-lasting results, 1-2 session/s once or twice a year is/are recommended.

Most common combinations

Omeoformula® 2 + Gel Beauty: as a base for any cosmetic session to be mixed with:

- + **Omeoformula® 1:** adiposity and cellulite.
- + **Omeoformula® 3:** eye bags, cellulite and tissue toning.
- + **Omeoformula® 1 + Made®:** oily skin, congested face.

Packaging

Box of 10 x 2 ml ampoules/vials.
 Box of 50 x 2 ml ampoules.



GUNA S.p.a

Via Palmanova, 71 - 20132 MILAN - ITALY
 tel. +39 02 280181 - fax +39 02 28018449
 www.gunainc.com - e-mail: export@guna.it
 www.gunainternational.com