

**New**



# Guna**elmint**

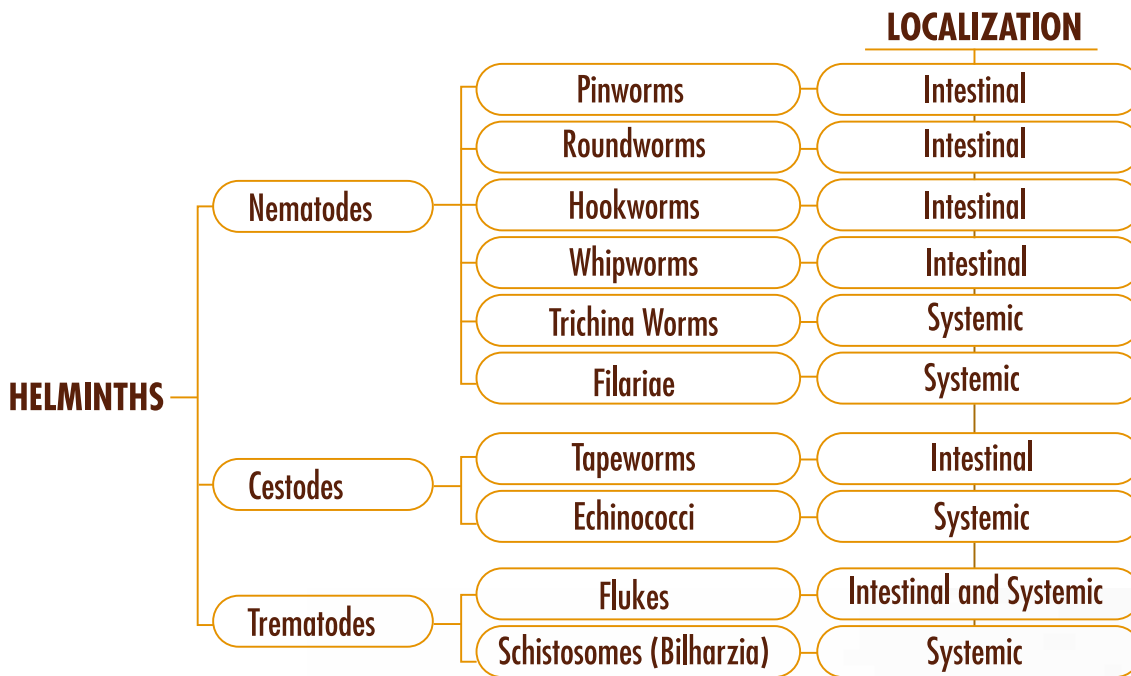
## **Natural defense against intestinal parasites**



# HELMINTHS: HIDDEN EPIDEMIC<sup>1-2</sup>

**Helminth infections** are a significant clinical problem not only in the developing countries, where they are responsible for morbidity and mortality both in adults and children, but also in industrialized countries. It has been estimated that over 80% of the population of developing countries are affected by parasite infections. In western countries helminth infections are often underestimated and there is little talk about them. And yet, they may cause different disorders.

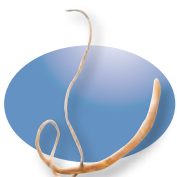
In Italy the incidence of **pinworm infestation** (*Enterobius vermicularis*) in pre-school age reaches **10%** and is **widely spread** and **recurrent**. Adults are not immune to helminth infestation



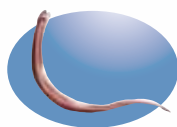
*Enterobius vermicularis*  
(Pinworms)



*Taenia solium*



*Trichuris trichiura*



*Trichinella*



## HELMINTHS: THE SYMPTOMS<sup>3</sup>

**Larva** and **adult helminths** can easily infest the bowel and migrate to other organs (eg. liver, lungs, brain, etc.). While remaining silent for several years, the **helminths** can bring about deep changes both in bowel function and in the whole body, either directly or through the toxins they produce. All this may cause many diseases that can be frequently observed clinically.

**Helminth infestations can often cause the so-called VAGUE and INDEFINITE SYMPTOMS**

**Constipation, diarrhea, abdominal bloating**

**Irritable bowel syndrome**

**Fatigue, irritability and difficulty falling asleep**

**Skin irritations and infections with itching and redness**

**Increased susceptibility to infections and allergies**

**Changes in appetite**

**Tendency to gain or loss weight**

**Decreased absorption of nutrients**

**Research studies in the field of phytotherapy<sup>4</sup> have led Guna to formulate a new supportive natural treatment to counteract helminth infestation**

**- UNPLEASANT TO HELMINTHS,  
PLEASANT TO MAN**

**- WITH BROAD SPECTRUM OF ACTION**



## THE LIFE CYCLE OF HELMINTHES AND THE NATURAL ACTIVITY OF Guna**elmint**

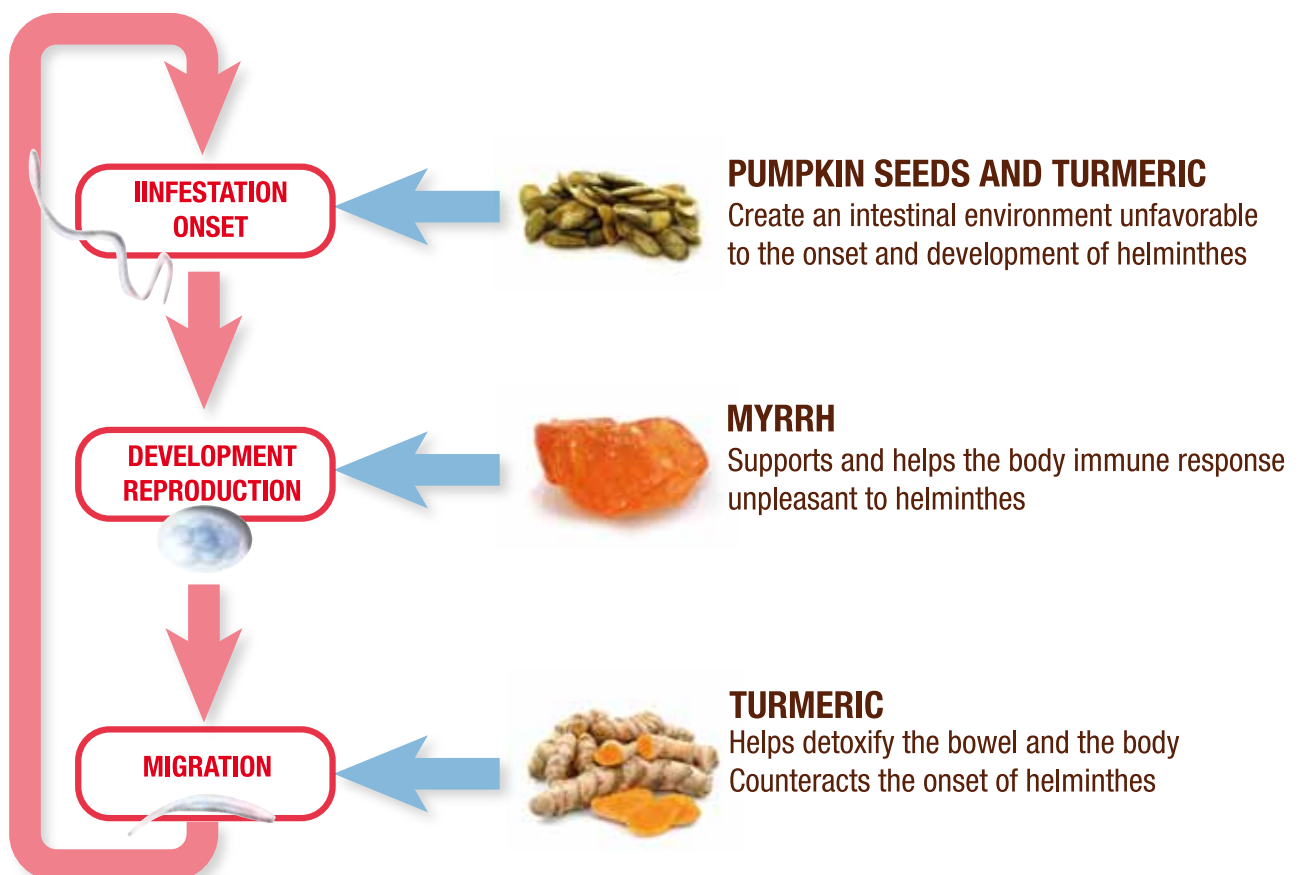
Due to its **special** and **innovative synergistic combination** of standardized plant ingredients from:

**Pumpkin seeds, Myrrh**  
and **Turmeric.**

Guna**elmint**, is useful as a supportive treatment to counteract intestinal infestation as:

- **It helps to eliminate the helminthes**
- **It prevents them from infesting the body once again**
- **It detoxifies the bowel**
- **It supports the immune system**

Due to its **special natural synergy**, Guna**elmint** acts on the whole life cycle of parasites:



## THE INGREDIENTS OF Gunaelmint

### PUMPKIN SEED dry extract (*Curcubita pepo L.*)<sup>5-6-7</sup>



Its natural extracts contain **cucurbitin**, a rare pyrrolizidine amino acid that creates conditions in the bowel that are extremely unfavorable to the onset and survival of helminthes and their larva. Cucurbitin is also useful to help paralyze the helminthes and thus eliminate them physiologically. Furthermore, these extracts also have general detoxifying properties.

### MIRRA GOMMYRRH GUM RESIN dry extract (*Commiphora myrrha Eng.*)<sup>8</sup>



Various research studies have shown that its extracts are particularly unpleasant to helminthes. It has been also recognized that they have an important action to support the Immune System.

### TURMERIC RHIZOME dry extract (*Curcuma longa L.*)<sup>9-10</sup>



Its extracts contain **curcuminoids** (cyclocurcumin, curcumin, demethoxycurcumin, bisdemethoxycurcumin). These molecules create conditions that are particularly unfavorable to a possible onset of Helminthes, and they also support the Immune System. The turmeric extracts have also antioxidant and protective properties for the liver

## THE ELMINTHES THAT ARE COUNTERACTED BY Gunaelmint

Various research studies carried out on the ingredients\* of Gunaelmint, which are widely used by traditional phytotherapy, confirm that these ingredients counteract intestinal parasites:

- ***Enterobius vermicularis*** (Pinworm Nematodes)
- ***Toxocara canis*** (Ascaris Nematodes)
- ***Oesophagostomum spp.*** (Stongyloides stercoralis Nematodes)
- ***Raillietina spp.*** (Platyhelminthes Cestodes)
- ***Schistosoma spp.*** (Platyhelminthes Trematodes)
- ***Fasciola spp.*** (Platyhelminthes Trematodes)
- ***Heterophytes heterophyes*** (Platyhelminthes Trematodes)
- ***Tenia spp.*** (Platyhelminthes Cestodes).

\*See REFERENCES

## Gunaelmint: WHEN TO USE IT

- AS A SUPPORTIVE THERAPY AGAINST INTESTINAL ELMINTH INFESTATION
- TO CREATE UNFAVORABLE CONDITIONS FOR THE VITALITY OF INTESTINAL PINWORMS, ROUNDWORMS, TAPEWORMS AND SCHISTOSOMES, THUS HELPING TO ELIMINATE THEM
- TO HELP PREVENT ANY POSSIBLE FUTURE INFESTATION

Gunaelmint IS WELL TOLERATED AND IS NOT HARMFUL TO THE HUMAN BODY

## Gunaelmint: BENEFITS

- SPECIAL FORMULATION
- HIGH NATURAL SYNERGISTIC ACTIVITY: BROAD SPECTRUM OF ACTIVITY
- SUPPORT TO THE IMMUNE SYSTEM
- MAXIMUM SAFETY
- TOXIC TO WORMS BUT HARMLESS TO HUMANS
- HIGH COMPLIANCE AND PLEASANT TASTE
- GLUTEN AND LACTOSE FREE

**IT IS NOT CONTRAINDICATED FOR CHILDREN,  
PREGNANCY OR BREAST-FEEDING**



**DIRECTIONS:** take 1 sachet three times daily for 5 days; after 15 days, repeat another course of therapy for 5 days.

**HOW TO USE:** dissolve the content of one sachet in a glass of water, stir and take straightaway.

## Guna**elmint**: COMBINATIONS

### Guna**elmint** + Colostro Noni

recovering  
the integrity  
and functionality of  
the gastrointestinal  
mucosa



### Guna**elmint** + *pro*FLORA™

recovering  
the intestinal  
microflora



### Guna**elmint** + Guna**basic**

helping acid-base  
rebalancing  
and the physiological  
drainage



### Guna**elmint** + *pro*FOS™

helping maintain  
a physiological  
intestinal transit  
to eliminate toxins



Guna**elmint** can also be used in combination with an appropriate homotoxicological therapy.



## INGREDIENTS

Pumpkin (*Cucurbita pepo L.*) seed dry extract, flavoring, myrrh (*Commiphora myrrha Eng.*) gum resin dry extract, turmeric (*Curcuma longa L.*) rhizome dry extract, maltodextrins, thickening agents: gum arabic, xanthan gum; acidity regulator: citric acid; sweetener: sucralose.

### NUTRITION FACTS

	per 100 g	per 3 sachets
Calories	365,3 kcal 1549,0 kJ	46,0 kcal 195,2 kJ
Protein (N X 6,25)	0,40 g	0,05 g
Carbohydrate	83,65 g	10,54 g
Fat	0,03 g	0,00 g
Pumpkin dry extract	2,38 g	300 mg
Myrrh dry extract	1,67 g	210 mg
Turmeric dry extract	0,79 g	100 mg



## REFERENCES

1. Peruzzi S. et Al. - Prevalenza delle parassitosi intestinali a Parma durante il 2005. *Acta Biomed*, 2006 ;77;197-199.
2. Perarca V. - Corso di Parassitologia - Università di Roma "La Sapienza". 2003-2004.
3. Qualizza et Al. - Caratteristiche dei pazienti con sintomi allergici e test in vitro positivo per infestazione da *Toxocara canis*. Dipartimento di Allergologia, Istituti Clinici di Perfezionamento, Milano; IRCCS Fondazione Cà Granda, Milano.
4. <http://www.ema.europa.eu/ema/>: sezione Herbal Medicines for Human Use.
5. Pastò L. - Dottorato di ricerca in Scienze della Nutrizione e degli Alimenti. Alma Mater Studiorum Università di Bologna, 2010.
6. Mägi et Al. - Nematicidal effect of powdered pumpkin seeds in piglet compared to Ivermectin a non-treated control. EMA: Assessment of *Cucurbita pepo L.* semen 2011; [www.ema.it](http://www.ema.it).
7. Campanini E. - Dizionario di fitoterapia e piante medicinali - Ed. Tecniche Nuove.
8. Abo-Madyan AA et Al. - Efficacy of Myrrh in the treatment of schistosomiasis (*haematobium and mansoni*). *J Egypt Soc Parasitol*. 2004 Aug;34(2):423-46.
9. Sheldon S.H. et Al. - PDR Integratori Nutrizionali CEC Editore.
- 10) Araujo CC et Al. - Biological activities of *Curcuma longa L.* *Mem Inst Oswaldo Cruz* 2001; 96(5): 723-8.

## WARNINGS

Keep the product in a cool, dry place away from direct light.

The expiry date refers to a correctly stored product in undamaged packaging. Do not exceed the recommended daily intake. Keep out of reach of children under 3 years of age. Food supplements should not be used a substitute for a varied diet and a healthy lifestyle.

## PACKAGING

30 x 4.2 g sachets.



GUNA S.p.a

Via Palmanova, 71 - 20132 MILAN - ITALY  
tel. +39 02 280181 - fax +39 02 28018449  
[www.gunainc.com](http://www.gunainc.com) - e-mail: [export@guna.it](mailto:export@guna.it)  
[www.gunainternational.com](http://www.gunainternational.com)